



***Autofocus  
Instant Land Camera***

*600 Series Camera*

**Polaroid**



This product is listed by Underwriters' Laboratories, Inc. (UL). As a condition of listing, UL requires that basic safety information be provided.

## IMPORTANT SAFEGUARDS

AS WITH ANY BATTERY-OPERATED EQUIPMENT, OBSERVE THESE BASIC SAFETY PRECAUTIONS:

1. FOLLOW ALL OF THESE INSTRUCTIONS.
2. DO NOT USE THE ELECTRONIC FLASH UNIT IF IT HAS BEEN DROPPED OR DAMAGED, UNTIL IT HAS BEEN EXAMINED AT AN AUTHORIZED POLAROID SERVICE CENTER.
3. TO AVOID ELECTRICAL SHOCK HAZARDS, DO NOT DISASSEMBLE THE FLASH UNIT. SERVICE OR REPAIR WORK MUST BE DONE ONLY BY AN AUTHORIZED POLAROID SERVICE CENTER. INCORRECT REASSEMBLY CAN CAUSE AN ELECTRICAL SHOCK WHEN THE FLASH UNIT IS USED AGAIN. DO NOT IMMERSE THE FLASH UNIT IN WATER OR OTHER FLUIDS.

## PLEASE KEEP THESE INSTRUCTIONS

## A better way to take pictures

Few picture-taking situations provide just the right lighting to take the best photographs.

So Polaroid designed a unique new photographic system that makes it possible to take great pictures any time – in any light.

Under the direction of a tiny electronic computer, the system – a camera with a built-in electronic flash and Polaroid 600 Land film – measures light from the scene and blends it with just the right amount of flash to create an ideal photographic light for taking beautiful pictures – outdoors and indoors.

Your camera has an automatic focusing system, which consists of a fixed front lens and an internal rotating disk with four lenses. In a split second, using sound waves to measure the distance between the camera lens and your subject, the computer selects the lens that will put your subject into sharp focus, as you take the picture.

For the first time, the high-energy battery built into every film pack powers both the camera and the electronic flash, which means you need never purchase other batteries.

Polaroid 600 color film – the most light-sensitive instant color film made – was developed just for this system. *Other Polaroid films will not fit into or work with this system.*



## Use the electronic flash for every picture—outdoors and indoors

The human eye adjusts to light differently than the camera's eye, which makes it difficult to judge how light from the scene will affect your picture.

Everyone who takes pictures has had the experience of looking at a subject or scene, photographing it, and being disappointed with the picture because it looks different than what he or she saw in the viewfinder.

Polaroid's new photographic system gives you the beautiful picture you expect to see. By blending light from the scene with just enough flash, the system creates a new photographic light that more accurately reproduces, on film, what appeared in the viewfinder.

Here are some examples of what this system can do when you use the electronic flash for **every picture**—outdoors and indoors.

*In this outdoor scene, photographed without electronic flash, bright sunlight has created harsh facial shadows. When taking a picture in this lighting situation, your eye adjusts to these shadows, showing you, in the viewfinder, facial features that will not be recorded on film.*



*Your new photographic system will blend sunlight with just the right amount of flash to soften shadows and reveal the facial details you expect to see in the picture.*

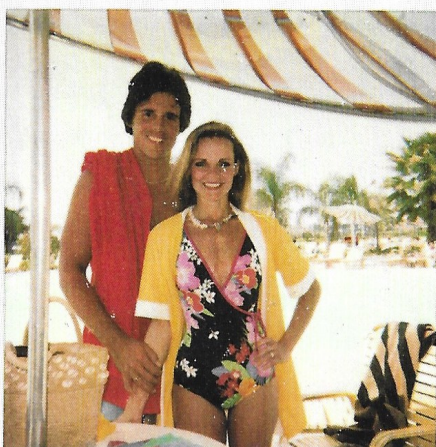


**Use the electronic flash for every picture—outdoors and indoors**

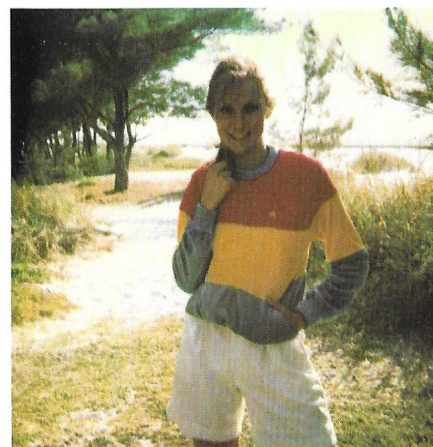
*Shade, such as that provided by a poolside umbrella, will spare your subject from having to squint in the harsh sunlight, but it does not always provide enough light for a well-exposed picture.*



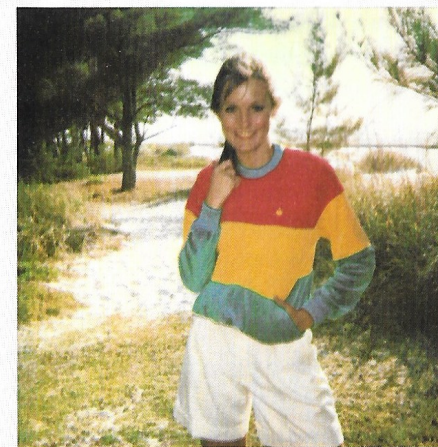
*Your camera's built-in electronic flash will automatically supply the additional light needed to produce a pleasing photograph.*



*Here, the sun was behind the subject, casting more light on the background than on the foreground, causing the subject to appear too dark in the picture.*



*The combination of just enough electronic flash with existing light will produce an evenly-exposed picture.*





## Contents

- 2 Important safeguards

## The system

- 3 A better way to take pictures
- 4 Use the electronic flash for every picture – outdoors and indoors
- 9 Features
- 9 Film

## Using the camera

- 10 Raising and lowering the electronic flash unit
- 12 The camera
- 14 Split-second automatic focusing
- 14 Electronic flash range
- 15 Loading the camera
- 16 Holding the camera
- 18 Taking the picture
- 20 Composing the picture while the flash is charging
- 21 Charge the flash in advance to take a spontaneous picture

## Special situations and troubleshooting

- 22 Photographing a distant scene through a window
- 23 Lighten/darken control
- 24 Trouble-free picture-taking

## Customer information

- 25 Polaroid service centers and offices
- 26 Full one-year warranty

## Call us, free

Whenever you have a question about your camera or pictures, call us toll free...

**800-343-5000**

from anywhere in the continental U.S.A. except Massachusetts, Alaska and Hawaii. From those states, call collect – (617) 494-8266. Our Customer Service representatives can be reached every weekday from 8 a.m. to 5 p.m., your local time. In Canada, call toll free – 800-268-6970.

For your convenience, these phone numbers are on the inside of your camera. You can see them when the film door is open.

## Features

Both the electronic flash and the camera are powered by the high-energy battery built into every film pack.

The battery supplies all the power you need to fire the flash for **every** picture – outdoors and indoors.

The flash fully charges in about 5 seconds. It can be charged in advance to take a spontaneous picture (see page 21).

A red light in the viewfinder indicates when the flash is charging. The camera will not operate until the flash is fully charged and the red light goes off. Since you cannot take a picture while the flash is charging, you never waste film.

In addition to providing split-second automatic focusing, your camera's computer uses the distance measurement to your subject to carefully control the amount of electronic flash that will reach the film.

With the automatic focusing system, you can get as close as 2 feet from your subject to take exciting close-ups.

## Film

Polaroid 600 color film was developed specifically for your camera system. Other Polaroid films will not fit into or work with this camera. Each film pack provides 10 color pictures.

This new film is the most light-sensitive instant color film made.

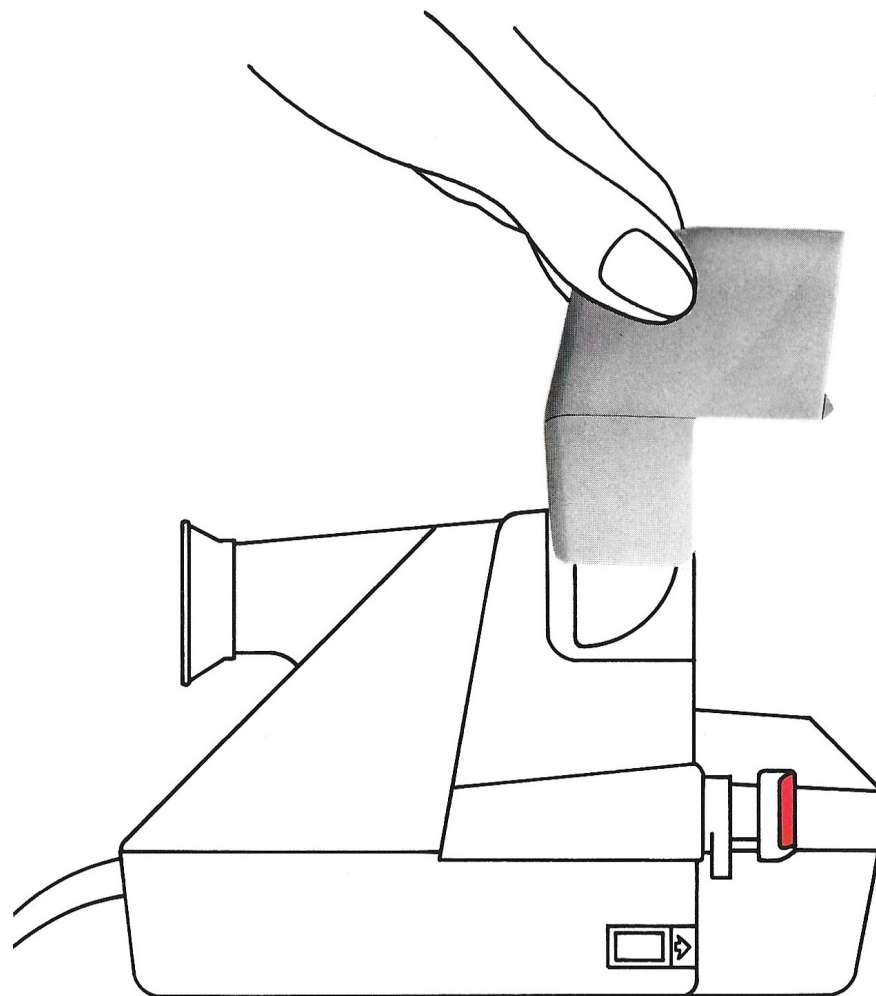
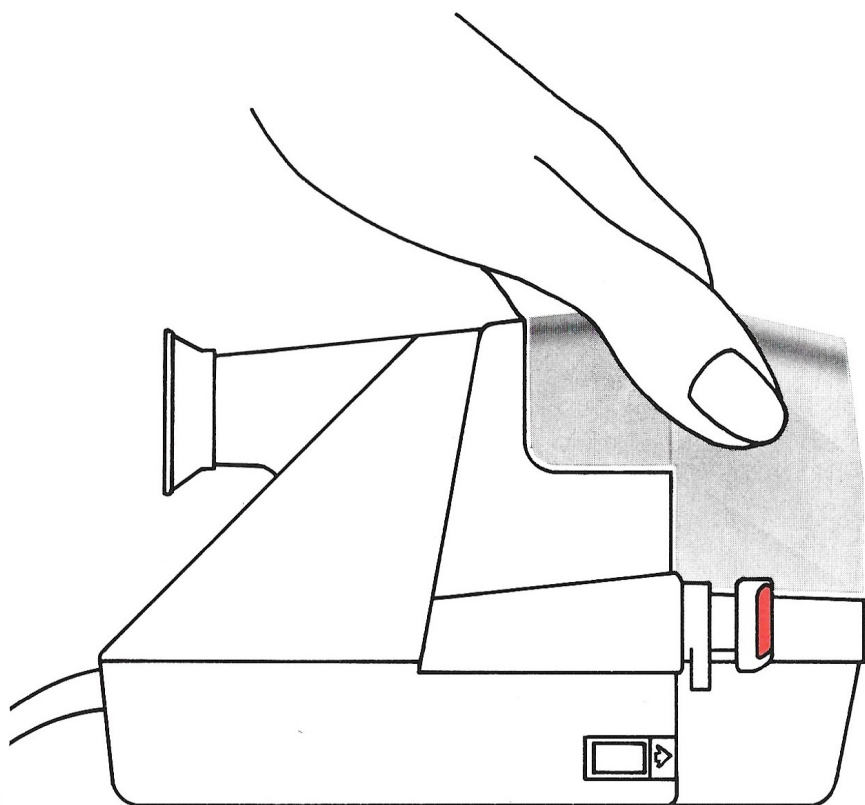
It is one of the world's fastest developing color films. In just seconds, the image begins to appear.

## Raising and lowering the electronic flash unit

Grip the sides of the flash unit.

Swing the flash unit up to snap it in place.

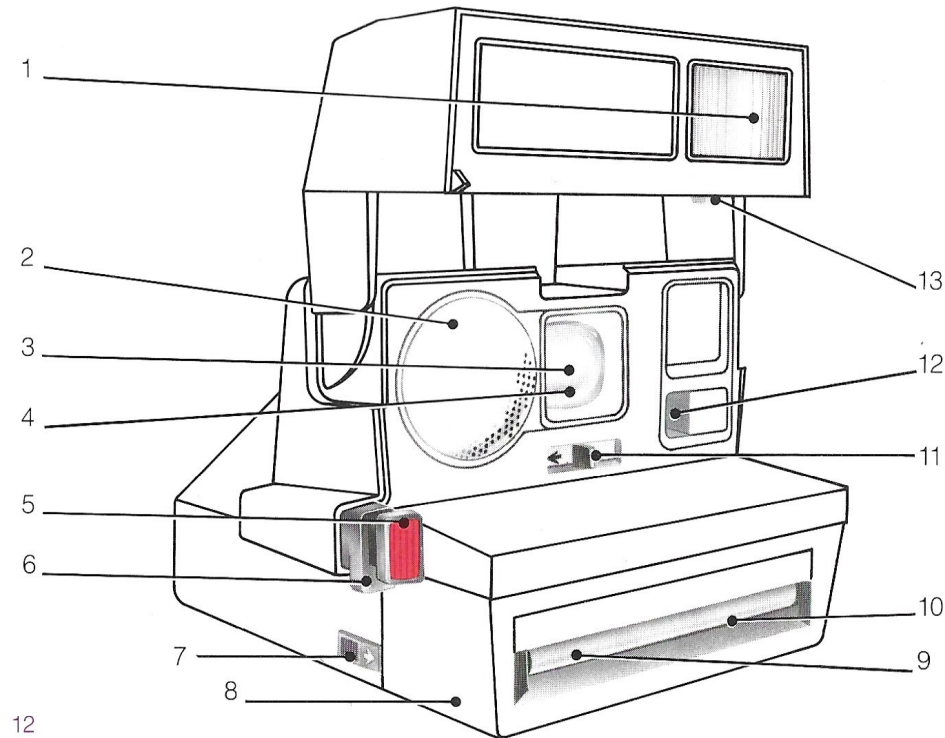
When you are not using the camera, lower the flash unit. It will protect the lens and lock the red button.



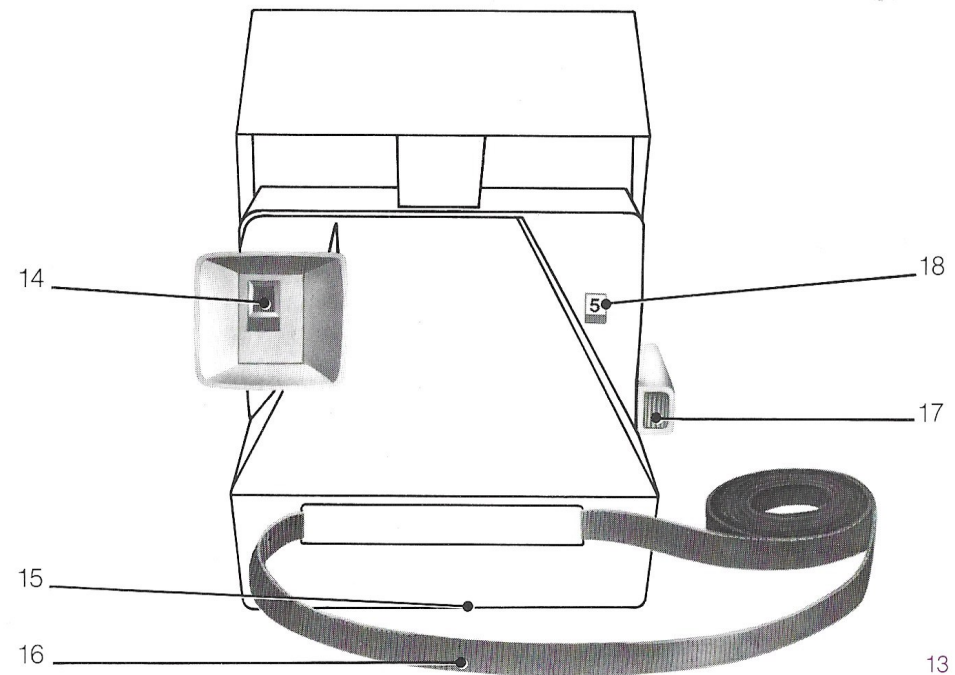


## The camera

1. Built-in electronic flash (1/3000 of a second).
2. Transducer (sends the sound waves and receives the echo).
3. Automatic focusing system (a fixed front lens and an internal rotating disk with four lenses).
4. Automatic variable speed/aperture shutter system (speeds range from 1/200 to 1/3 of a second; apertures from f/10 to f/45).
5. Red button (pressed halfway, it charges the flash; pressed the rest of the way, it activates the shutter).
6. Flash override button (see page 22).
7. Film door latch.
8. Film door.



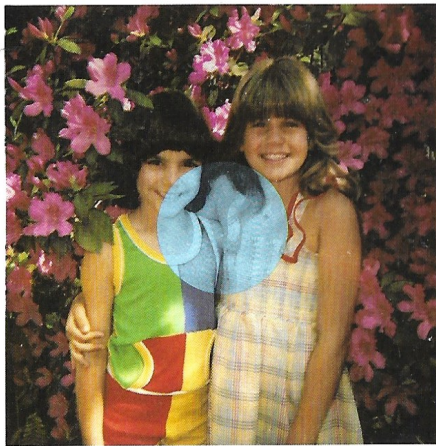
9. Film shade (shields each picture from light as it exits the camera; it rolls out with the picture, then snaps back).
10. Film exit slot.
11. Lighten/darken control (see page 23).
12. Photocell (silicon photo-diode – measures light from the scene, outdoors and indoors).
13. Autofocus override button (see page 22).
14. Viewfinder.
15. Tripod socket.
16. Adjustable neckstrap.
17. Thumbrest.
18. Picture counter (indicates how many pictures remain).



### Split-second automatic focusing

When you take a picture, your camera sends sound waves, at frequencies beyond our range of hearing, to the central part of the scene (approximate area circled in blue). At the same time, an internal disk with four lenses (behind the fixed front lens) starts to turn.

In a split second, a tiny electronic computer measures the time it takes for the sound to reach your subject and the echo to return, and calculates the distance between the camera lens and your subject. The lens that will put your subject into sharp focus at that distance then locks into place.



### Electronic flash range

Be sure to use the flash for every picture – **outdoors and indoors.**

For best results indoors, your subject should be from **2 to 14 feet** away and near a light colored background.

### Loading the camera

Use **only** Polaroid 600 color film.

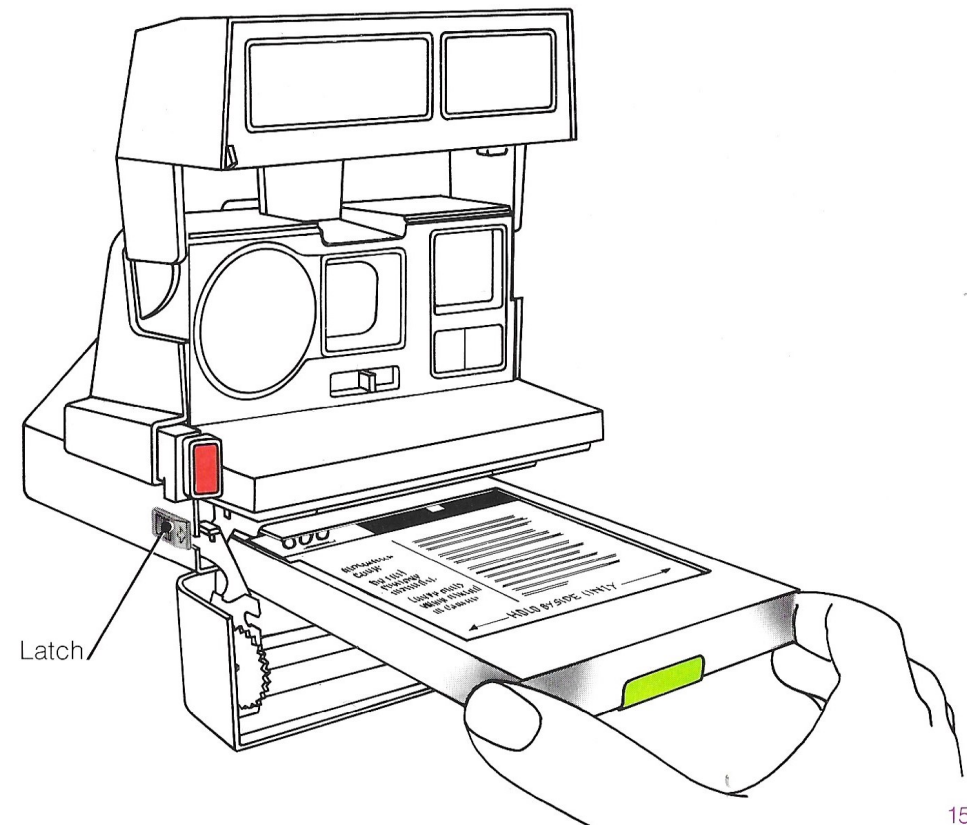
Push the latch **forward**. The film door will drop open.

Hold the film pack by its edges **only**, as shown (printed side up), and slide it all the way into the camera. Close the film

door. The camera will automatically eject the film cover.

Save the film cover to order copies and enlargements of your favorite pictures.

To remove an empty film pack, pull the colored tab on the film pack.

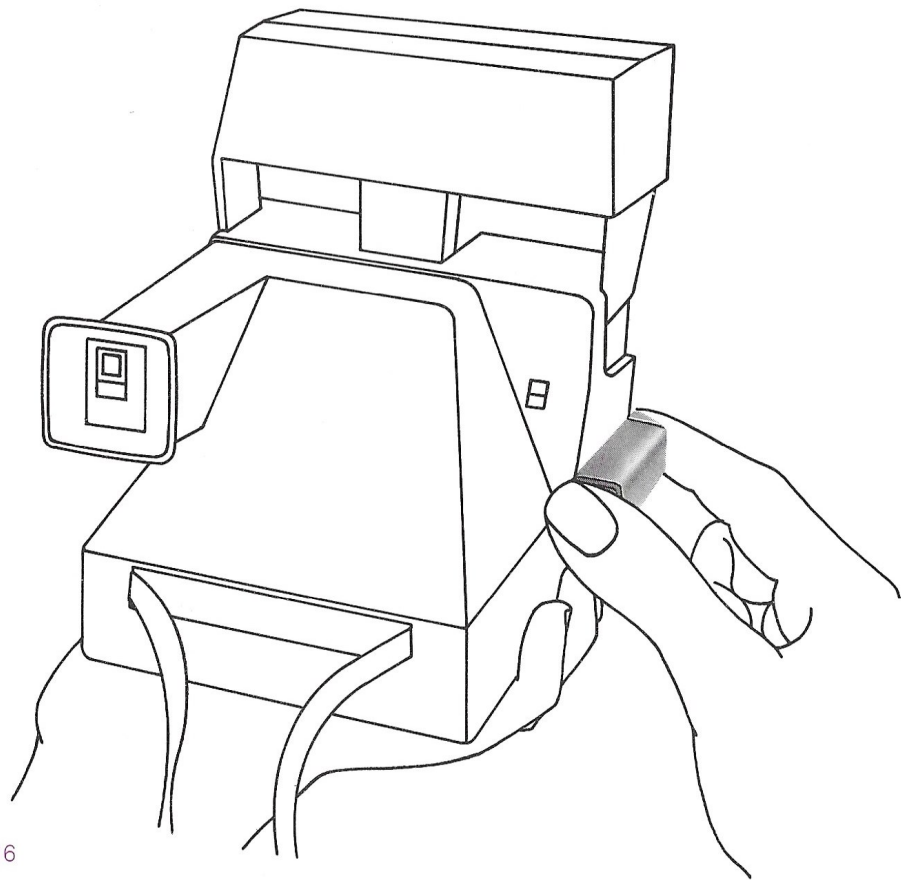




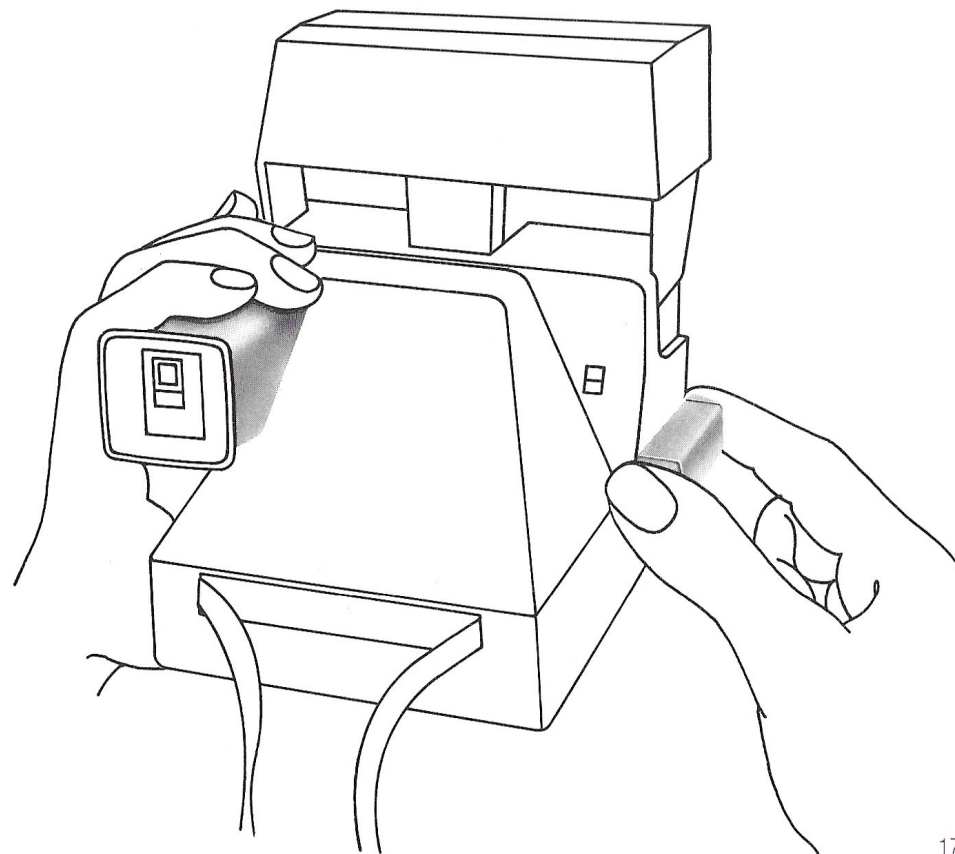
## Holding the camera

Grip the camera in the palm of your left hand.

Place your right thumb on the thumb-rest, your index finger on the red button, and curl your other fingers into your palm.



Or, if it is more comfortable, place the fingers of your left hand over the top of the viewfinder and your thumb under the camera – holding your right hand as described on the opposite page.

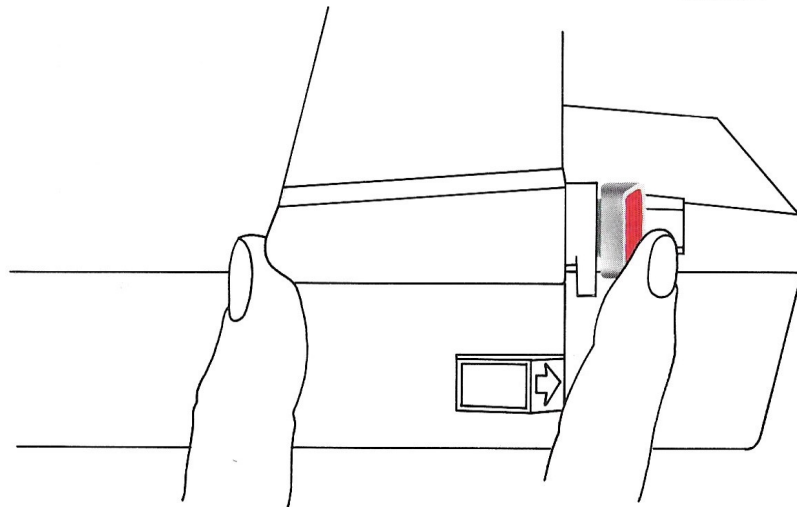
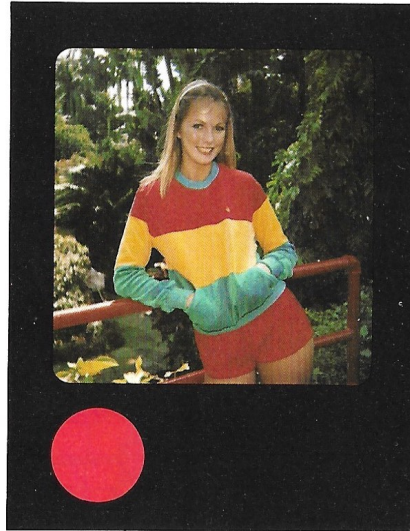


## Taking the picture

Stand at least **2 feet** from your subject.

Press the red button until you feel resistance. **Hold it there.**

A red light in the viewfinder indicates that the flash is charging. In about 5 seconds, when the flash is fully charged, the red light goes off. The camera will not operate while the red light is on.

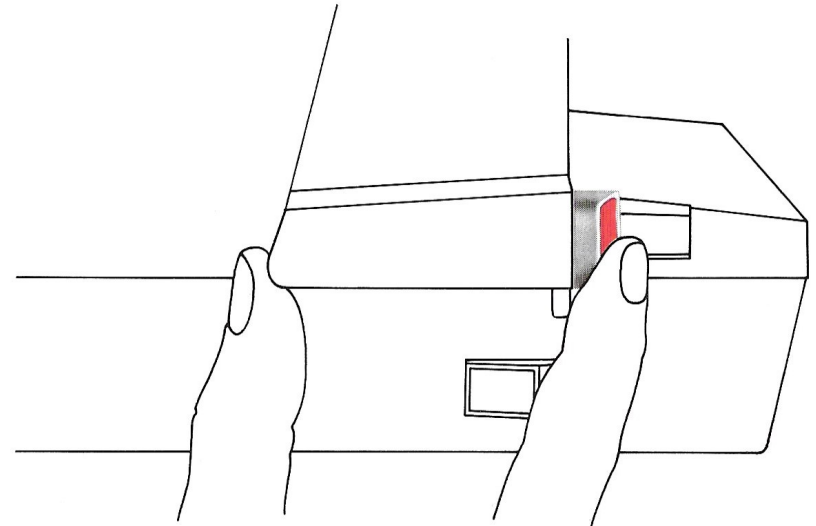


To take the picture, hold the camera steady and press the red button the rest of the way. The camera will then automatically eject the developing picture.

Always use the thumbrest and gently press the red button; jabbing the button will jar the camera and blur the picture.

Hold the developing picture by its wide white border. While it is developing, keep the picture out of direct sunlight.

When the temperature is below 55°F (13°C), keep the camera and film warm. Immediately place the developing picture in a warm pocket for at least a minute.





### **Composing the picture while the flash is charging**

Press the red button partway so the flash will charge while you are composing the picture.

Look through the viewfinder.

In addition to your subject, notice the foreground and the background as they appear in the viewfinder.

Frame your picture, changing your position or the camera angle until you see the best composition.

Move in close (but not closer than 2 feet) so that the important elements of your picture fill the frame.

### **Charge the flash in advance to take a spontaneous picture**

After the flash has charged and the red viewfinder light has gone off, you can release the red button.

The flash then stays fully charged for a short time and retains most of its charge for several minutes. This allows you to take a spontaneous or a candid picture.

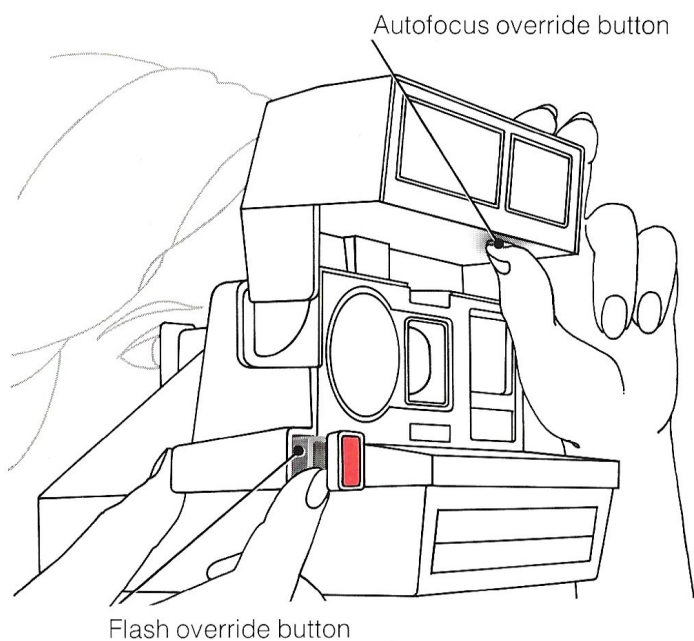
When you are ready to take the picture, press the red button all the way. (If the red light goes on briefly, continue to take the picture.)

## Photographing a distant scene through a window

Photographing a **daylight** scene (more than 12 feet away) through a window is a special situation which requires that you take these precautions.

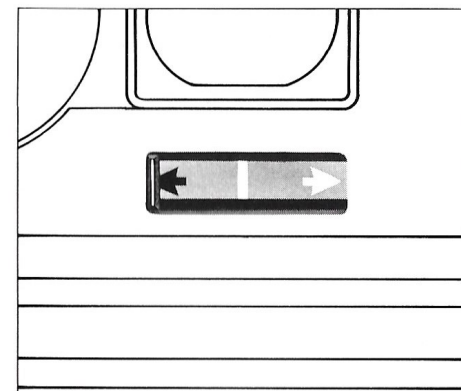
To avoid focusing on the window, **hold in** the autofocus override button, as

shown. To avoid a flash reflection, stop the flash from firing and take the picture by pressing the flash override button, as shown.

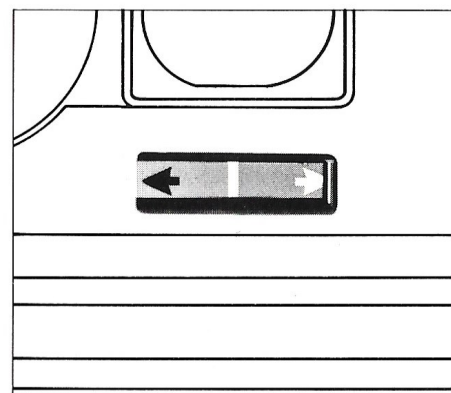


## Lighten/darken control

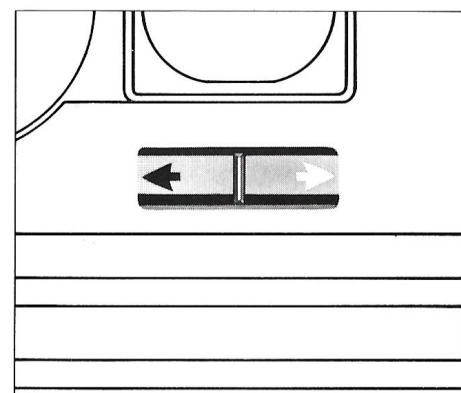
Use this control **only** when you want to reshoot a picture to make it lighter or darker.



**To take a darker picture**, slide the control past the black arrow.



**To take a lighter picture**, slide the control past the white arrow.



**Return the control to center** when you have finished reshooting. A white double arrow appears in the bottom of the viewfinder as a reminder that the control is not in center position.



## Trouble-free picture-taking

### Hold the developing picture by its wide white border.

While it is developing, keep the picture out of direct sunlight.

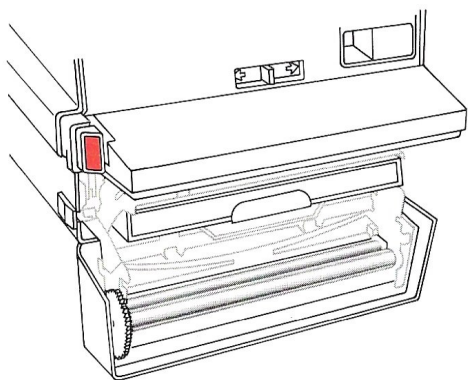
When the temperature is below 55°F (13°C), keep the camera and film warm. Immediately place the developing picture in a warm pocket for at least a minute.

### Keep the developer rollers clean.

Dirty rollers can cause a repeated spot or bar pattern to appear in the picture.

The developer rollers are located inside the film door. If there is film in the camera, open the door in dim light.

Clean the rollers with a damp, lint-free cloth.



### What to look for if the camera does not operate:

Check the picture counter. When the film pack is empty, the flash will charge but the shutter will not operate.

Look through the viewfinder. When the red light is on, the flash is charging and the shutter will not operate.

### Be sure the sound waves have a clear path to your subject.

The sound waves travel to the central part of the scene (see page 14). If an object in the foreground prevents the sound from reaching your subject, the internal lens disk will focus on the foreground object, causing your subject to be out of focus.



## Polaroid service centers and offices

If you think your camera needs repair, please call Customer Service toll free at 800-343-5000 from anywhere in the continental U.S.A. except Massachusetts, Alaska and Hawaii. From those states, call collect – (617) 494-8266. We can be reached Monday through Friday, 8 a.m. to 5 p.m., your local time. In Canada call toll free 800-268-6970. We may be able to save you the time and trouble of returning the camera to one of the centers listed below.

### California

Polaroid Corporation  
3232 West MacArthur Blvd.  
Santa Ana 92704

### Canada

Polaroid Corp. of Canada, Limited  
350 Carlingview Drive  
Rexdale, Ontario M9W 5G6

### Georgia

Polaroid Corporation  
5601 Fulton Industrial Blvd., S.W.  
Atlanta 30378

### Illinois

Polaroid Corporation  
2020 Swift Drive  
Oak Brook 60521

### Massachusetts

Polaroid Corporation  
784 Memorial Drive  
Cambridge 02139

### New Jersey

Polaroid Corporation  
P.O. Box 607  
W-95 Century Road  
Paramus 07652

### Puerto Rico

Polaroid Caribbean Corp.  
Charlyn Industrial Park  
Road 190, Km 1.7  
Carolina 00630  
Telephone: (809) 768-1119

Mailing address:

P.O. Box 2032  
Carolina 00630

### Texas

Polaroid Corporation  
1945 Walnut Hill Lane  
Irving 75062

### Additional Service Centers:

There are many other Polaroid-owned and independent Authorized Service Centers in the U.S.A. and overseas. To locate the one closest to you or to where you are travelling, call our Customer Service numbers listed above.

### Full one-year warranty

If your camera proves to be defective within the warranty period, we will, without charge, either repair it or at our option replace it with a fully reconditioned camera.

The warranty period is one year from the original date of purchase. **To verify the warranty period, you should keep the sales slip or other proof of the purchase date.** Without this information, the warranty will be determined by the manufacturing date on the camera.

The repair or replacement of your camera is guaranteed for the remaining warranty period on your original camera. If, within the warranty period, your camera is mailed to us for service from inside the U.S.A., it will be returned with a postal refund.

**For warranty service,** the camera must be returned to and repaired by a Polaroid Service Center or Authorized Service Center. You can return the camera through your Polaroid camera dealer. If that is not convenient, call Customer Service toll free at 800-343-5000 from anywhere in the continental U.S.A. except Massachusetts, Alaska and Hawaii. From those states, call collect – (617) 494-8266. We can be reached Monday through Friday, 8 a.m. to 5 p.m., your local time. In Canada call toll free 800-268-6970.

This warranty gives you specific legal rights and you may also have other rights which vary from state to state.

**This warranty excludes all consequential damages. Some states do not allow the exclusion or limitation of accidental or consequential damages, so the foregoing limitation or exclusion may not apply to you.**





